

TELEPHONE INTERFACE CARDS

IF-IT4 • IF-IT4BT

TECHNICAL CHARACTERISTICS

IF-IT4#04 (rackable version)

- ✓Size: 200 (L) x 20 (H) x 100 (D) mm ("extended European" format)
- ✓Weight: 110 g
- ✓The IF-IT4#04 card (without the housing) is attached directly to the ICOM relays
- ✓Power supply between 6 and 32 V

IF-IT4BT (case version)

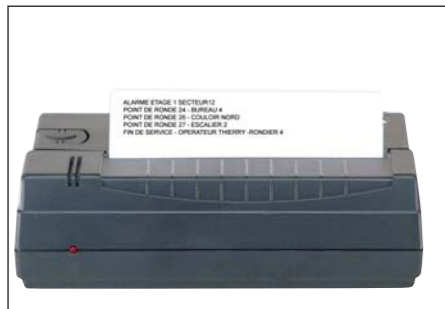
- ✓Size: 241 (L) x 60 (H) x 105 (D) mm
- ✓With bracket: 244 (L) x 64 (H) x 109 (D) mm
- ✓Weight: 0.8 kg (1.44 kg with packing)
- ✓Connections: 1 x SUB-D 9 female, 1 x SUB-D 9 male, 1 x SUB-D 50 female, 1 x RJ-45, 1 x power supply plug, FME base for GSM option
- ✓Power indicator light (LED) and grounding screw
- ✓Power supply from 6 to 32 V

Options :

- ✓Security functions: SECURITY option
- ✓GSM: relay IF-F310/F410RTGSM#04 or case IF-IT4BTGSM#04
- ✓*Telemaintenance: TELEMANTENANCE option

Accessoires :

- ✓Lightning arrester protection ref. IF-FLIT1
- ✓8-input card ref. IF-MEE8
- ✓8-output card ref. IF-MES8 (8 on/off outputs) or IF-MER8 (8 relay outputs)
- ✓Printer ref. KYO PRINTER



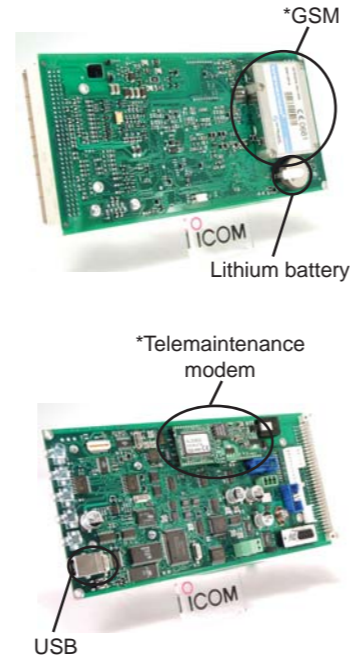
Printer



Lightning arrester protection



"Bus" assembly on another 8-input card and an 8-output relay card



Icom France s.a.s.

TELEPHONE INTERFACE CARDS

IF-IT4

Rackable version

IF-IT4BT

Version black box



IF-IT4BT model

- ✓ Telephone interface (STN-PABX networks)
- ✓ GSM interface (option)
- ✓ Satellite interface (option)
- ✓ Programmable input/output management
- ✓ Functions dedicated to safety
- ✓ Adapts to every type of analog radio to allow the use of old radio equipment ("black box" version)
- ✓ Programmable digital voice messaging
- ✓ Programming by USB link

IF-IT4 is the ideal interface for connecting your radio devices (radio system, relays, etc.) to the Switched Telephone Network (STN).

- ✓ Every private radio installation can be interfaced directly with the various private telephone networks (directly at the PABX) or public systems (switched network, GSM).
- ✓ IF-IT4 incorporates all the functional features used for Security (PTI, Positive Security, etc). In particular alarm management, input/output card management for remote-control functions, link to GTC etc.
- ✓ This interface can be incorporated from the start into your ICOM radio relay in its IF-IT4 version or in its "black box" version, or can be added to an existing radio network (adapts to most of the transmitter/receiver units on the market),
- ✓ IF-IT4 can be programmed by PC with user-friendly and open-ended software to address all your needs.

The specifications and information given in this document may be modified without prior notice

Icom France s.a.s.

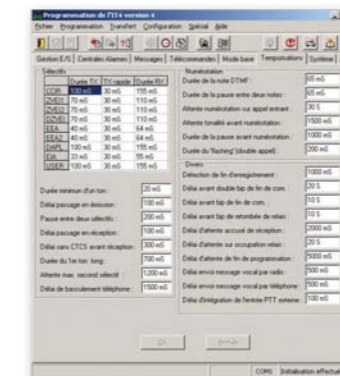
Zac de la Plaine - 1, Rue Brindejonc des Moulinais
BP 45804 - 31505 TOULOUSE CEDEX 5
Tél : +33 (0)5 61 36 03 03 - Fax : +33(0) 5 61 36 03 00
WEB ICOM : <http://www.icom-france.com>
E-mail : icom@icom-france.com



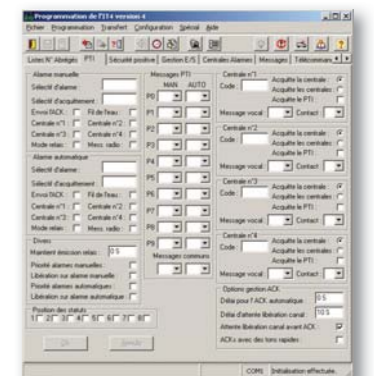
Document non contractuel / Edition 05/2006 V1



Input/output management



Time delays



PT I adjustment

Icom France s.a.s.

MAIN CHARACTERISTICS

- Remote control for each customer (On/Off) and for the equipment
- Interlocking slaved onto a given customer
- Many programmes time-outs available: anti—absorption, consecutive inhibition, maintenance in transmission, etc
- ✓ FFSK digital keying (IBIS 1200)
- ✓ 4 types of incoming calls including one “Taxi” salvo mode with automatic line off-hook at initiative of radio channel
- ✓ Starting up of a “real time” printer via an RSC 32 connection with for each customer: the printout of the busy time, called mobile number, dialed number, etc. (every character string can be reprogrammed)
- ✓ Numbering adapted to various requirements:
 - Via a table of 2000 numbers
 - Directly by the extraction of variables,
 - Transparent with regeneration of the DTMF.
- ✓ List of 2000 abbreviated numbers (20 customers with 100 numbers) with the possibility of organizing this list differently. Examples: 5 customers having 400 numbers each or one customer with the 2000 numbers etc
- ✓ Management of call transfers (flashing)
- ✓ Automatic Gain Control (AGC) for the automatic compensation of audio losses on PTT lines (30 dB dynamic - adjustable)
- Telephone line status test circuit
- ✓ Vocal memory and programmable welcoming message (up to 17 minutes and 252 messages possible)
- ✓ Identification of calling party:
 - DTMF overnumbering
 - Calling Number Identification circuit
- ✓ Detection of “battery faults with voice messages and alarm contacts”,
- ✓ “Secret” function during telephone communication,
- ✓ Possibility of simulating input/output calls to generate events
- ✓ Remote relay opening function on “carrier” with CTCSS receiving,
- ✓ Recording and reading of voice messages via radio equipment, telephone and PC
- ✓ Automatic switchover to interface mode from repeater mode on reception of associated 5-tone code.
- ✓ Telemaintenance (as an option) by modem and PC,
- ✓ “Real-time” clock with backup by a lithium battery.

Dispatcher mode

- ✓ Micro and PTT input
- ✓ Audio output for amplified speaker
- ✓ Compatible with “Caméléon” computer console via USB or serial port

GSM mode (as an option)

- ✓ Connection of radio device to telephone network without filar line,
- ✓ Rerouting of GSM calls coming in from PMR mobiles (GSM Gateway)
- ✓ GSM backup mode (if the STM line is out of order)
- ✓ Router for GSM numbering

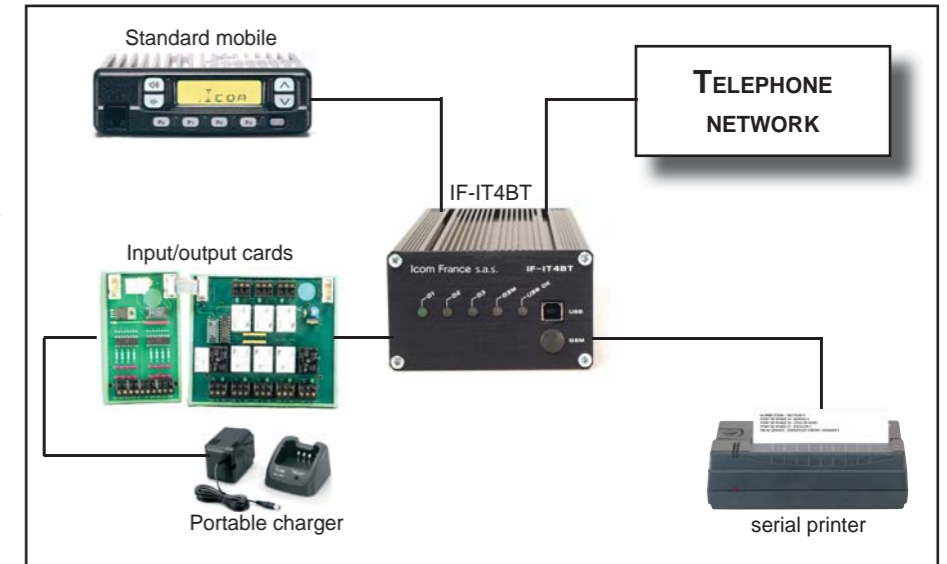


(Open) repeater equipped with IF-IT4 card (without covers).

Specific “SECURITY” functions (optional)

PTI functions

- ✓ Management of a fleet of 10 PTI mobiles
- ✓ Possibility of associating a voice message with each type of alarm (manual alarm, automatic alarm) and for each radio (2 x 10 messages),
- ✓ Distribution of alarm messages either by radio or by telephone or both,
- ✓ Possibility of triggering up to 4 alarm transmission central units for each type of alarm triggered (automatic/manual)
- ✓ Possibility of combining an additional voice message for each alarm central unit,
- ✓ Association of an output contact with each central unit,
- ✓ Activation ou non de l'impression au fil de l'eau pour chaque type d'alarme
- ✓ Automatic or manual management of the various receipts of acknowledgement either directly or via the interface or during acknowledgement of the central unit, either by radio via the relay or by the serial link (Icom protocol),
- ✓ Possibility of managing the PTI fleet without the management of the relays (for the alarm central unit only) for use with simple radio equipment (simple bass),
- ✓ Possibility of acknowledging the central unit for all the other central units simultaneously by DTMF code encoded on between 1 and 4 figures.

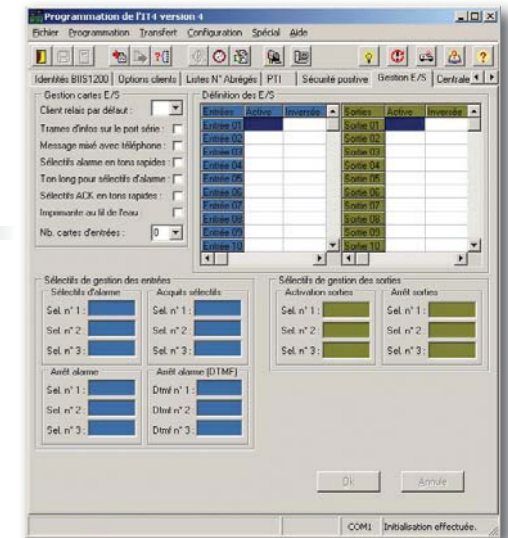


Positive security – Additional functions

- ✓ Automatic/manual enrolment/de-enrolment of a PTI mobile in the test group either by a specific selection (manual) or by input contact associated with PTI (automatic – detection and portable loader for instance),
- ✓ Activation from between 1 and 4 alarm central units for each type of event:
 - Enrolment of a mobile
 - De-enrolment of a mobile
 - Loss of a mobile
- ✓ Possibility of combining an additional voice message for each alarm central unit,
- ✓ Activation or not of real-time printout of all the events associated with positive safety management.

Input/output management (optional cards)

- ✓ Possibility of simultaneously managing 64 inputs and 64 outputs
- ✓ Each input can be configured separately. Possibility of defining the operating direction, the integration time, and all associating an output with it, etc.
- ✓ Possibility of activating an alarm for each input with transmission of selection and/or voice message and transmitting the latter either by radio or by telephone (alarm central units) or by both.
- ✓ Each output can be configured separately with the possibility of defining the direction of operation, delayed or not: resettable or not.
- ✓ Possibility of associating with a different selection for activating and deactivating for each individual output.
- ✓ Applications: possible transmission of voice messages over radio channel (64 maximum) relay type outputs or open collector type transmitter outputs for remote control (64 maximum), etc.



And also

- ✓ Interphone interfacing
- ✓ S232 additional serial port
- ✓ TTL serial port
- ✓ DSP card
- ✓ Radio transponder.
- ✓ etc...