

MATERIAL

Transceivers:

- IF-F3162DSPTILOC without keypad series : LWA (Lone worker alarm) transceivers with localization functions
- IF-F3162DTPTILOC with keypad series : LWA (Lone worker alarm) transceivers with localization functions

IF-F4162DTPTILOC
With short antenna

IF-F3162DSPTILOC



- API Box: Ref IF-DATI



Radio base:

- Radio base series IF-BF5062 connected to a PC



Radio repeaters:

- IC-F5100 radio repeater series with 220V power supply and duplexer output



Other equipment:

- Localization beacons Ref: IF-ELTXLOC/BE
- API repeaters Ref: IF-RXAPI
- Tags Ref : IF-BADGE
- Chargers Ref: BC-DATI,BC-121N, etc.
- Cables



Computer hardware:

- PC with microphone
- An inverter
- CAMELEON GUARD software

PC SYSTEM REQUIREMENTS

A PC set aside for the purpose with following minimum requirements:

- Pentium III (2Go RAM, 10 Go of free space)
- Video card 1024x768 min.
- RS232 Port
- USB Port
- Sound card Soundblaster compatible
- Extended keyboard.
- Wheel mouse.
- 17 or 19 inch screen with resolution of 1280*1024 pixel.



A second PC screen to facilitate usage is recommended. It also permits a separated display of the site maps (this will require the CG-VISUAL module and a PC with two video outputs).

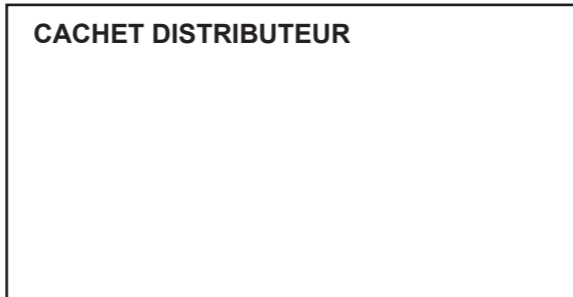
Les spécifications et informations données dans ce document peuvent être modifiées sans préavis.

Icom France s.a.s.

Zac de la Plaine - 1, Rue Brindejonn des Moulinais
BP 45804 - 31505 TOULOUSE CEDEX 5
Tél : +33 (0)5 61 36 03 03 - Fax : +33 (0)5 61 36 03 00
WEB ICOM : <http://www.icom-france.com>
E-mail : icom@icom-france.com



CACHET DISTRIBUTEUR



Document non contractuel / Edition 08/2011 V1



CAMELEON GUARD

Super vision of radio communications

Real time guard tour management

Staff Monitoring

Alarm management

CAMELEON GUARD

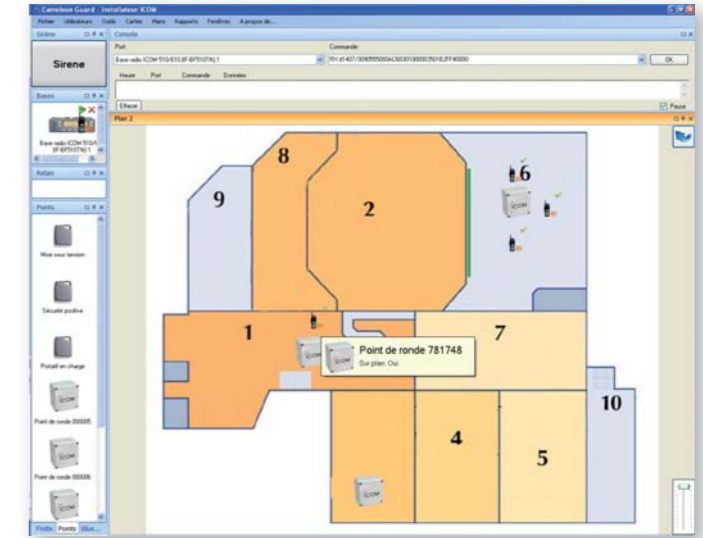
Icom France s.a.s.

COMPATIBLE 6,25 kHz NUMERIQUE

Real time communication, supervision and management!

Why have a radio management system?

- For reliability of the professional radio system: radio networks with resources which are independent of other traditional telephone or GSM type equipment
- For real-time staff monitoring: system of active beacons or electronic badges
- To control your operating budget: payment of an annual fee allowing unlimited radio communication
- For tough equipment: compact advanced professional terminals designed for intensive use
- For versatile applications: CAMELEON GUARD can be adapted and customised on request for specific demands



Calling and communicating

- CAMELEON GUARD deeply simplifies and increases the possibilities for using radio as a means of communication.
- CAMELEON GUARD manages the whole process of receiving calls and actions associated with it.
- CAMELEON GUARD optimises the transmission of information by very simply allowing predefined or free content messages to be sent and received. (Messages displayed on the screen of the transceiver or as sound by voice synthesis).
- CAMELEON GUARD permits the association and carrying out of safety instructions. In the roundsman mode, each point of the round or beacon can be associated with a particular instruction ensuring the safety of the user and correct completion of the round (for example: "check the tank level", "check the temperature", "stop the auxiliary engine", etc.)

Users' safeguard

- **Monitoring of the patrol staff on the round**
A predefined time is allocated to the path between 2 points on the round. In case of any delay, the system informs the roundsman and the security PC proposing different options/actions: (more time allowance, alert signal, alarm, etc.)
- **Recording of alarms**
 - ✓ Manual or automatic alarms triggered from users' transceivers
 - ✓ Alarms from other systems (smoke detectors, intrusion detectors, etc.)
- **Detection of abnormal situations with automatic triggering of alerts or alarms**
 - ✓ Positive security information: triggered by connection with one of the transceivers registered on the network
 - ✓ Man Down information or lack of motion of any LWA transceiver registered on the network
 - ✓ Time exceeded information during use of the roundsman function
- **Real-time information of PC operator for immediate action**
 - ✓ Continuous audible alarm
 - ✓ For each event: display of time, origin and name of alarm data in the events log.
- **Visual signaling of an alarm**
 - ✓ If an abnormal event triggers an alarm, a red flashing sign is displayed on the map on the place concerned (last transmitted patrol point or location beacon)
 - ✓ This type of localization instantly provides the PC operator with additional information associated with the site of the event.

Checking of optimal operation of security system

CAMELEON GUARD includes many procedures for checking that the whole network is functioning correctly :

- Positive security: regular checking of the connection to the transceivers, bases and repeaters .
- Permanent monitoring of transceiver battery levels (on each transmission, each transceiver sends various specific parameters).
- Monitoring of the localisation beacon battery levels for a fully operational network. (on each transmission, each transceiver informs the system of beacon battery levels).

