

 ICOM

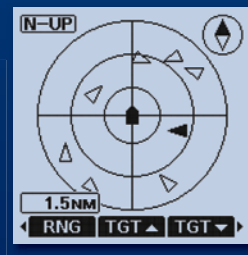
IC-M94D

VHF MARINE TRANSCEIVER WITH DSC & AIS

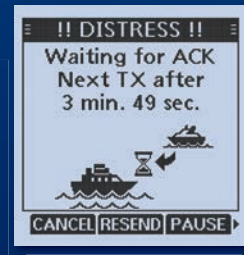


AIS Traffic Info, Now in Your Hand

- ▶ AIS Receiver and Class-H DSC in One Package



AIS screen



DSC ACK screen

- ▶ 6 W RF Output Power
- ▶ Class-Leading 1500 mW Audio Output
- ▶ Simplified Navigation Function
- ▶ 10 Hours (approx.) of Long Operating Time*
* Typical operation with 5:5:90 duty ratio.
- ▶ Float'n Flash and MOB Auto Set Functions

AIS Receiver and DSC in One Package

AIS receiver and DSC function add further assurance for safety at sea. With the integrated AIS receiver, vessel traffic information is shown on the display. The AIS target call function allows you to easily set up a DSC individual call. Distress calls can be made with the rear panel button.



DISTRESS button

6 W RF Output Power and 10 Hours of Operating Time

The IC-M94D's 6 watts of transmit power provides extended communication range for the user. The supplied 2400 mAh (typical) high capacity Li-ion battery, BP-306 provides 10 hours of operating time, under normal conditions*.

*Approximate, typical operation with 5:5:90 duty ratio.

Class-Leading 1500 mW Audio Output

Icom's custom high-power capacity speaker delivers a loud 1500 mW (typical) audio output with improved acoustic sound clarity for noisy maritime environments.

Simplified Navigation Function

The Navigation function guides you to a specified waypoint. You can assign up to 50 favorite fishing spots or destinations as waypoints.



Navigation screen

Float'n Flash and MOB Auto Set Functions




The radio floats and the LCD screen, keys and rear panel Distress button flash to help you retrieve it from the water. Pressing the distress button while Float'n Flash is working will transmit the MOB distress signal, rather than the plain undesignated one for better protection of sailors.

And More

- Integrated GPS receiver
- Active noise canceling technology
- IPX7 submersible (1 m depth of water for 30 minutes)
- Weather channel receive (for USA version)
- Dualwatch and Tri-watch functions
- Favorite channel function
- Supports 4-digit channels
- AquaQuake™ prevents audio degradation from a water-logged speaker

OPTIONS

Some options may not be available in some countries. Please ask your dealer for details.

<p>RECHARGEABLE Li-ion BATTERY PACK</p>  <p>BP-306 Li-ion 7.2 V, 2280 mAh (minimum) 2400 mAh (typical)</p> <p>Provides 10 hours* of operating time. Same as supplied. * Approximate, Typical operation with 5:5:90 (Power save ON)</p>	<p>DESKTOP CHARGER</p>  <p>BC-251 Charges the BP-306 (in the radio) in 3.5 hours (approx.). Same as supplied.</p>	<p>AC ADAPTER</p>  <p>BC-242 Use with BC-251.</p>	<p>SPEAKER-MICROPHONES</p>  <p>HM-228 IPX7 compact type</p> <p>HM-165 IPX7 rugged type Floats in water with the radio.</p>
<p>LEATHER BELT HANGERS</p>  <p>MB-96FL Long fixed type</p> <p>MB-96F Fixed type</p>	<p>CIGARETTE LIGHTER CABLE</p>  <p>CP-25H For use with BC-251 Equivalent to the supplied CP-26.</p>	<p>ANTENNA FA-SC59V Same as supplied</p> <p>BELT CLIP MB-133 Same as supplied</p>	

SPECIFICATIONS

GENERAL		
Frequency range	TX RX DSC AIS (RX)	156.025–157.425 MHz 156.050–163.275 MHz 156.525 MHz 162.025 MHz
Usable channel groups	INT, USA, CAN, WX channels	
Type of emission	16K0G3E (FM), 16K0G2B (DSC) 16K0GXW (AIS)	
Current drain (at 7.2 V DC)	TX (6 W/1 W output) RX (Inter SP/Exter SP Max. audio)	1500 mA/700 mA (approx.) 700 mA/350 mA (approx.)
Operating temperature range	–20°C to +60°C; –4°F to +140°F	
Antenna impedance	50 Ω	
Dimensions (W×H×D) (projections not included)	60.9 × 145.8 × 43.8 mm; 2.4 × 5.7 × 1.7 in	
Weight (approximate)	357 g ; 12.6 oz (With BP-306, antenna, MB-133)	
TRANSMITTER		
Output power (Hi/Low)	6 W/1 W	
Max. frequency deviation	±5 kHz	
Frequency stability	±10 ppm	
Spurious emissions	–68 dBc typical	
RECEIVER		
Sensitivity (at 12 dB SINAD)	0.25 μV typical	
DSC receiver (at 1% BER)	–3 dBμ emf typical	
AIS receiver (at 20% PER)	–107 dBm	
Squelch sensitivity (Threshold)	0.25 μV typical	
Adjacent channel selectivity	70 dB typical	
DSC receiver (at 1% BER)	73 dBμ emf	
Spurious response	70 dB typical	
DSC receiver (at 1% BER)	73 dBμ emf	
Intermodulation	70 dB typical	
DSC receiver (at 1% BER)	68 dBμ emf	
Hum and noise	40 dB	
Audio output power	Internal SP (at 10% distortion)	1500 mW typical (8 Ω load) 350 mW typical (8 Ω load)
	External SP	

Measurements made in accordance with TIA/EIA-603. All stated specifications are subject to change without notice or obligation.

Applicable U.S. Military Specifications & IP Rating

Standard	MIL 810G	
	Method	Procedure
Low Pressure	500.5	I, II
High Temperature	501.5	I, II
Low Temperature	502.5	I, II
Temperature Shock	503.5	I-C
Solar Radiation	505.5	I
Rain Blowing/Drip	506.5	I, III
Humidity	507.5	II
Salt Fog	509.5	–
Dust Blowing	510.5	I
Immersion	512.5	I
Vibration	514.6	I
Shock	516.6	I, IV

Also meets equivalent MIL-STD-810-C, -D, -E and -F.

Ingress Protection Standard	
Water	IPX7 (Submersible protection)

Supplied accessories:

- BP-306 battery pack
- BC-251 battery charger
- AC adapter*
- CP-26 cigarette lighter cable
- MB-133 belt clip
- Antenna
- Hand strap
- * May differ depending on version.

Les spécifications et informations données dans ce document peuvent être modifiées sans préavis. La configuration du poste peut varier suivant les versions.

Icom France s.a.s.

Zac de la Plaine - 1, Rue Brindejonc des Moulinais
BP 45804 - 31505 TOULOUSE CEDEX 5
Tél : +33 (0)5 61 36 03 03
WEB ICOM : <http://www.icomfrance.com>
E-mail : icom@icomfrance.com



FOUNDING MEMBER OF

