

IP2AIR

Solutions



ADVANCED SOLUTIONS FOR SMART COMMUNICATIONS



IP2AIR is an advanced solution for professional two-way radios developed by ICOM FRANCE.

The IP2AIR solutions enhances your experience of radio by bringing new functionalities.

✓ ADVANCED SOLUTION

IP2AIR solutions transforms a simple radio network in an advanced network with a full set of functionalities designed by and for professional.

✓ SCALABLE SOLUTION

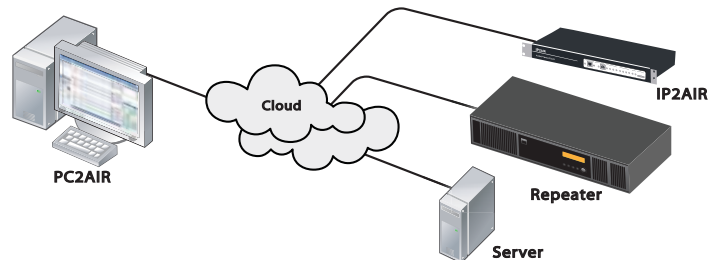
IP2AIR solutions is highly scalable to offer the user only what is needed and not be embarrassed by unwanted functionalities.

✓ OPEN SOLUTION

IP2AIR solutions is designed for ICOM equipment but it can be connected to almost all radio devices available on the market.

✓ THE SOLUTION IS COMPOSED OF THE FOLLOWING ELEMENTS:

- IP2AIR : a radio/IP controller board
- PC2AIR : a software connected to the IP2AIR. PC2AIR can work as stand-alone software or as a client software. In client/server mode, PC2AIR gets all parameters and data from the server.



RADIO



DISPATCHER



FLEET



PHONE APP



BRIDGE



TRACKING



PHONE



TRUNK



LINK



GUARD TOUR

<http://www.ip2air.com>

Icom France s.a.s.

Zac de la Plaine - 1, Rue Brindejonn des Moulinais
31500 TOULOUSE - FRANCE
WEB ICOM : <http://www.icom-france.com>
E-mail : icom@icom-france.com



FOUNDING MEMBER OF



IP2AIR

Solutions



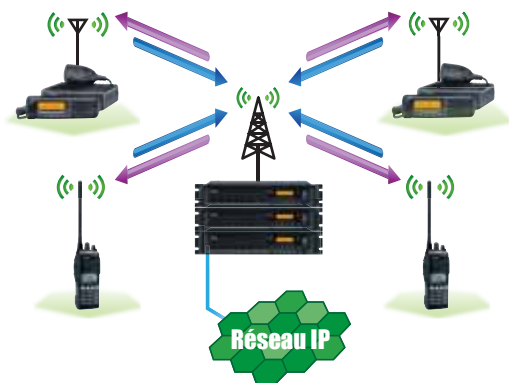
dPMR



dPMR stands for "digital Private Mobile Radio" and it is an open standard digital radio protocol published by the European Telecommunications Standards Institute (ETSI). dPMR utilizes 6.25kHz narrowband FDMA technology with the AMBE+2™ voice codec that offers many forms of voice and data applications.

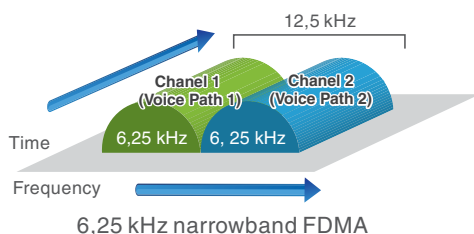
dPMR RANGE OF FUNCTIONAL LEVELS:

- Mode 1 Direct peer-to-peer mode
- Mode 2 Conventional repeater mode
- Mode 3 Centralized trunked mode



6.25KHZ NARROWBAND FDMA TECHNOLOGY

IDAS dPMR radios only use 6.25kHz per channel.



SELECTIVE CALL AND GROUP CALL

IDAS dPMR radios allow you to call individual or group users.

DIGITAL / ANALOGUE MIXED MODE OPERATION

IDAS dPMR radios have built-in CTCSS/DTCS, 5-Tone signalings and can receive both analogue and digital mode signals on a single channel.



DATA COMMUNICATION

IDAS dPMR radios provide status call, short data messages and GPS position data with voice communication.

dPMR INTEROPERABILITY

dPMR is designed to be a multi-vendor system. Each manufacturer must comply with ETSI.

DIGITAL SIGNAL COVERAGE

IDAS dPMR digital audio provides static noise free, stable audio for longer until the fringes of the communication range.

BATTERY LIFE

In the FDMA system, it could be possible to transmit at reduced power, which in turn conserves battery life and thus can prolong radio use time.

<http://www.ip2air.com>

Icom France s.a.s.

Zac de la Plaine - 1, Rue Brindejonn des Moulinais
31500 TOULOUSE - FRANCE
WEB ICOM : <http://www.icom-france.com>
E-mail : icom@icom-france.com



FOUNDING MEMBER OF



IP2AIR

Solutions



DISPATCHER



The dispatcher module monitors all the radio traffic over IP and offers various professional functionalities to simplify the task of the dispatcher.



VOICE AND DATA OVER IP

IP2AIR dispatcher integrates voice and data over IP. It is easy to use, highly customizable and supports single-site or multi-site operations.

TRAFFIC MANAGEMENT

PC2AIR Dispatch centers can monitor large amounts of traffic.

A mute function helps the dispatcher to focus on a specific voice. Each channel keeps a record of its latest event.

MIXED MODE: ANALOGUE /DIGITAL

PC2AIR supports digital as well as analogue channels. A friendly interface allows you to know exactly which mode is being used on each channel.

SUPPORT FOR ALL TYPES OF EQUIPMENT:

All types and all brands of radios can be connected to the IP2AIR : dPMR base station, DMR base station, repeater, HF transceiver, Avionics equipment, VHF marine.

MULTIPLE USER PROFILE

Multiple users can be issued with their own password and usernames to allow them to save their own individual profile settings and screen layouts. This also allows the administrator to identify which user was at the dispatch terminal at what time allowing for a user history.



<http://www.ip2air.com>

Icom France s.a.s.

Zac de la Plaine - 1, Rue Brindejonn des Moulinais
31500 TOULOUSE - FRANCE
WEB ICOM : <http://www.icom-france.com>
E-mail : icom@icom-france.com



FOUNDING MEMBER OF



IP2AIR

Solutions



FLEET MANAGEMENT



The fleet management module monitors and manages subscribers both in Analogue and Digital mode. It can be setup as independent software or in a client-server mode for bigger networks.

CLIENT/SERVER

The PC2AIR can be used as an independent applications, or as a client solution. In client-server mode, all data is stored and administrated through a smart web interface.

AUTOMATIC REGISTRATION SYSTEM (ONLINE/OFFLINE)

Fleet management module provides a registration services that informs the dispatcher of the presence of subscribers. The registration service informs the dispatcher if a subscriber is online and stores the last channel used by the subscriber in order to simplify the dispatch/subscriber interface process and make best use of the bandwidth.



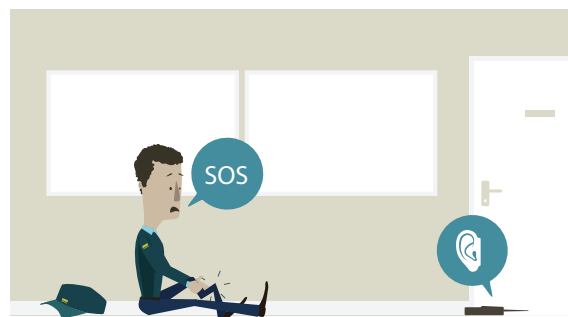
TEXT MESSAGING

The dispatcher can send and receive text messages from a single contact or a group.



EMERGENCY ALARM

The centralized Alarm module receives manual or automatic man-down lone-worker alarms. The dispatcher is immediately informed and the channel that has received the alarm is automatically selected. If the subscriber has a radio equipped with GPS, the tracking windows focus on his position.



E-MAIL GATEWAY

The fleet management module has the capacity to send email directly from the contact list.

AMBIENCE LISTENING

In case a user is not answering a call, the dispatcher can remotely open the microphone of its radio to check if everything is all right.

RADIO CHECK

The dispatcher can check the status of a radio to ensure it's under the radio coverage.

TRACKING

The tracking module show the position and address of subscribers equipped with GPS radios.

<http://www.ip2air.com>

Icom France s.a.s.

Zac de la Plaine - 1, Rue Brindejonn des Moulinais
31500 TOULOUSE - FRANCE

WEB ICOM : <http://www.icom-france.com>

E-mail : icom@icom-france.com



FOUNDING MEMBER OF

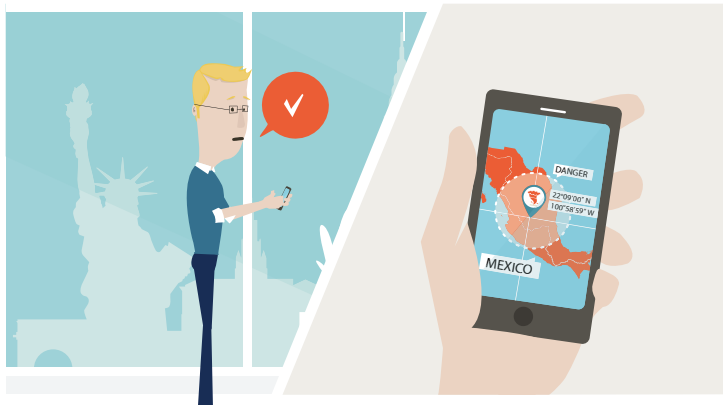


IP2AIR

Solutions



PHONE APP



The IP2AIR phone app uses GSM and 3G network to offer voice over IP and enable connection of smart phones all over the world to a radio network.

SUPPORT FOR ANALOGUE AND DIGITAL (dPMR) VOIP CALL

The App allows the user to communicate over IP with radios in analogue or in digital (dPMR). A smart talk back functions automatically selects the mode of communication and reverts back to its default setting once the app has cleared down.

SUPPORT OF IOS AND ANDROID

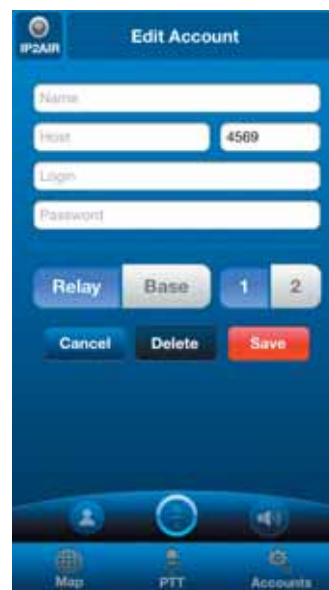
The IP2AIR app support either IOS or Android smartphone.

EASY TO CONNECT:

Few parameters are needed to connect a smartphone at any IP2AIR in the world.

REAL TIME TRACKING

The IP2AIR smart phone app collects data positions of users and localizes their position on a map.



<http://www.ip2air.com>

Icom France s.a.s.

Zac de la Plaine - 1, Rue Brindejonn des Moulinais
31500 TOULOUSE - FRANCE
WEB ICOM : <http://www.icom-france.com>
E-mail : icom@icom-france.com



FOUNDING MEMBER OF

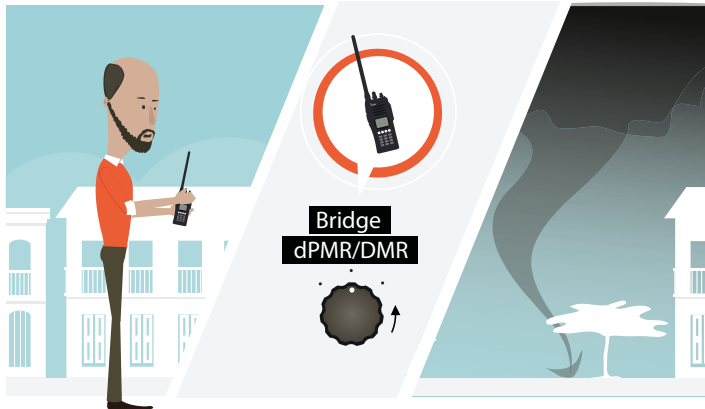


IP2AIR

Solutions



BRIDGE



The bridge module offers unified communications for interoperability between all kinds of radio network.

BRIDGE VHF AND HF NETWORK

The bridge module allows a VHF network and HF station to bridge together easily.



BRIDGE UHF AND VHF NETWORK

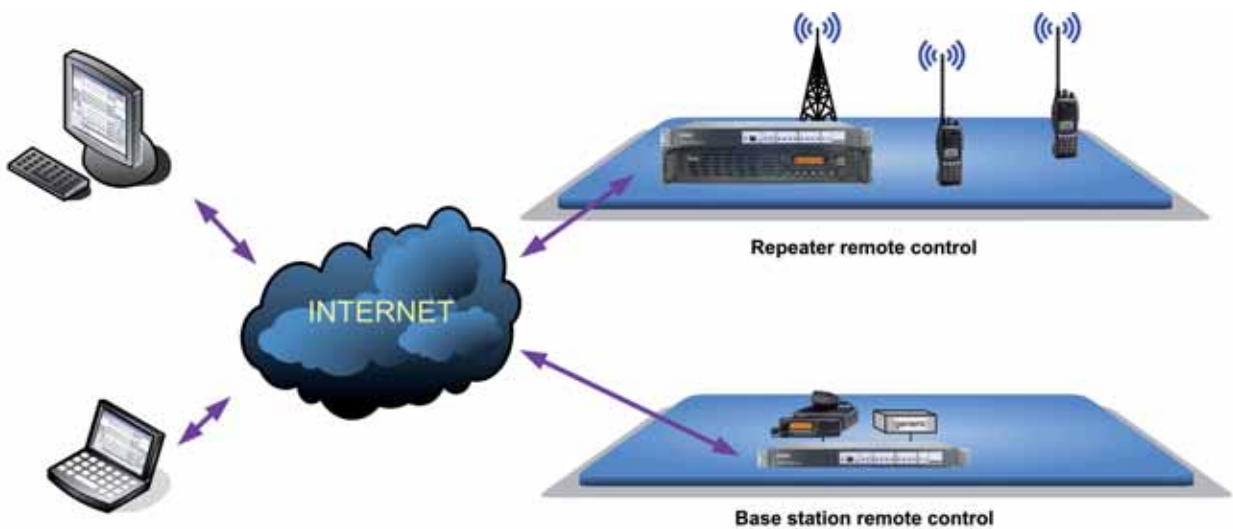
The Bridge module allows a VHF and UHF radio network to bridge easily.

BRIDGE dPMR AND DMR NETWORK

The bridge allows dPMR radios and DMR radios to bridge easily.

RADIO COVERAGE EXTENSION:

Connect together two base stations to rapidly extend the coverage of a radio network without using a repeater.



<http://www.ip2air.com>

Icom France s.a.s.

Zac de la Plaine - 1, Rue Brindejonn des Moulinais
31500 TOULOUSE - FRANCE
WEB ICOM : <http://www.icom-france.com>
E-mail : icom@icom-france.com



FOUNDING MEMBER OF





TRACKING



The tracking module monitors, tracks and logs the location and movement of subscribers. The dispatcher can monitor and be informed on the position of a single contact or group.

MONITOR A USER OR A GROUP OF USERS

The tracking module allows tracking of a single user or a group of users on a map. Handheld and mobile equipped with GPS can be configured to transmit their GPS data at pre-programmed intervals, on demand and in case of an emergency.



GEO-FENCING

The dispatcher can define zones on a map. The dispatcher can be informed if a user enters or leaves a zone and depending on the configuration an alarm can be launched.



SUPPORTED MAPS

The tracking module supports various kind of maps including Google map, Open street map and Bing map.

OFF LINE MODE

Maps information can be stored on the PC2AIR in order to work offline.

GPS INFORMATION

The direction and speed of a user is displayed on the map whether the user is on foot or in a vehicle as long as their radio has GPS installed.

CUSTOMIZING OBJECTS ON THE MAP

The dispatcher can customize a map by adding or subtracting objects as he/she sees fit.

LOCATION HISTORY

In client / server mode, all data positions of a user are stored and can be replayed by the dispatcher.



<http://www.ip2air.com>

Icom France s.a.s.

Zac de la Plaine - 1, Rue Brindejonn des Moulinais
31500 TOULOUSE - FRANCE
WEB ICOM : <http://www.icom-france.com>
E-mail : icom@icom-france.com



FOUNDING MEMBER OF



IP2AIR

Solutions



PHONE PATCH



The IP2AIR phone patch module links landline and mobile phones with two-way radios. Staff that do not carry a two-way radio can still contact the radio users.

SETUP A CALL IN ANALOGUE MODE

Analogue radios using DTMF can set up a phone call.

SETUP A CALL IN dPMR

dPMR radios take benefit of digital to setup either a private call or a group call.

IP2AIR SIP CLIENT

The IP2AIR has a SIP client built in and is able to connect to multiple IPBX lines.

POTS LINE

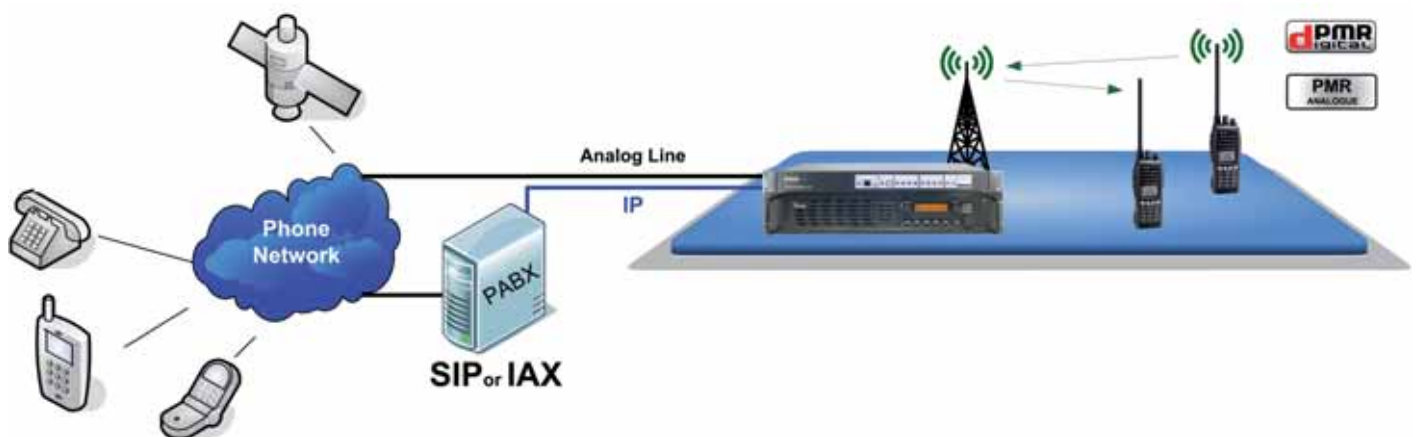
A pots line connector is directly available on the IP2AIR to offer connection for simple analogue phone line.

REDUNDANCY

When the SIP line is unavailable the POTS line can automatically be used for redundancy.

PC2AIR SIP CLIENT

The PC2AIR has a built in SIP client than can be connected to IPBX servers to allows Dispatchers to use a single interface for all communications.



<http://www.ip2air.com>

Icom France s.a.s.

Zac de la Plaine - 1, Rue Brindejonn des Moulinais
31500 TOULOUSE - FRANCE
WEB ICOM : <http://www.icom-france.com>
E-mail : icom@icom-france.com



FOUNDING MEMBER OF



IP2AIR

Solutions



EASY TRUNK



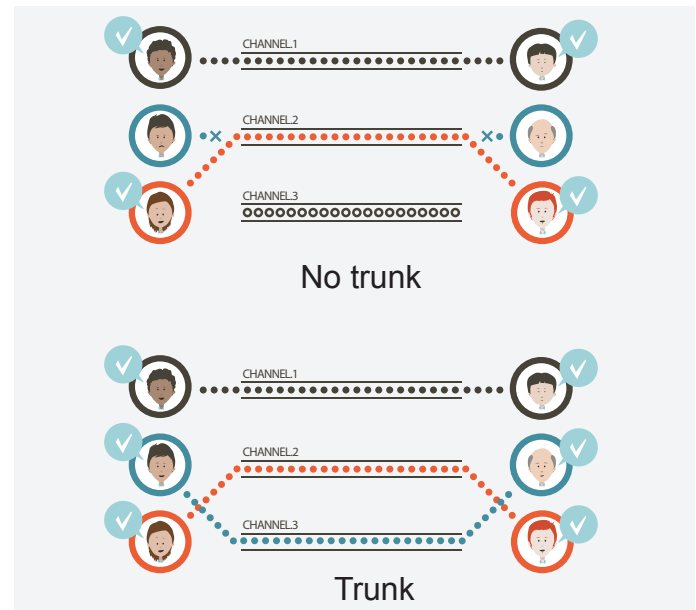
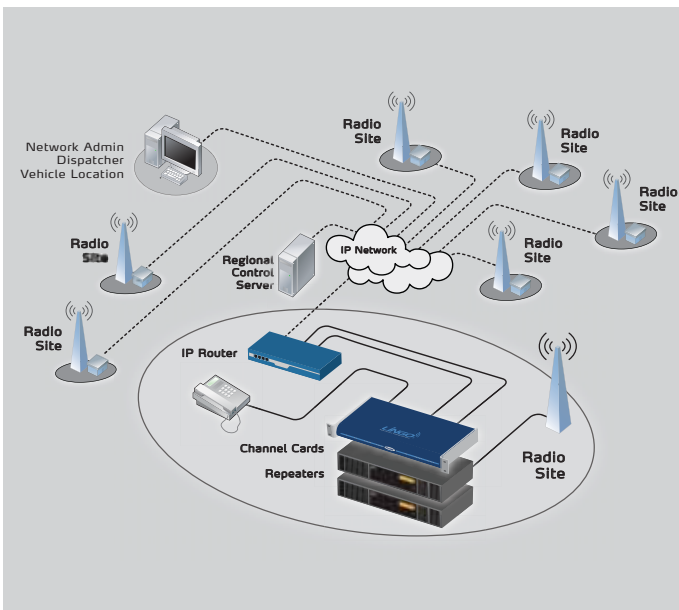
Trunk communications provide network access to many clients by sharing a single set of lines or frequencies instead of providing them individually thus creating a much more efficient and affective network.

dPMR MODE 3 TRUNK

dPMR Mode 3 trunk can offer multiple channel and multiple site trunked radio networks. This ensures optimum use of the spectrum and optimum density of radio traffic. The management of the radio network starts from the authentication of radios that wish to connect. Calls are then setup by the infrastructure when both parties have responded to the call request ensuring optimum use of the radio resource.

SCANNING TRUNK

IP2AIR offers scanning trunk. All radios on a site listen to a free channel which can accept call requests. When a request is received, that channel takes the call and all the other radios move to another free channel. Once the call has finished, all the radios involved in the call move to the free channel with the other waiting radios until they are called upon forcing the remaining radios to move once again to a free channel.



<http://www.ip2air.com>

Icom France s.a.s.

Zac de la Plaine - 1, Rue Brindejonn des Moulinais
31500 TOULOUSE - FRANCE
WEB ICOM : <http://www.icom-france.com>
E-mail : icom@icom-france.com



FOUNDING MEMBER OF



IP2AIR

Solutions



LINK



Once the network has been configured each group within the network can be linked together for immediate communications for an indeterminable amount of time.



HAND HELD LINK ESTABLISHMENT

Links can be established directly from authorized Handheld to allow field operation.

ESTABLISHED LINK IN ANALOGUE OR DIGITAL (dPMR)

Links can be established in digital (dPMR) or in analogue (5 tones).

MULTIPLE NETWORKS

Establishing links between multiple networks while at the same time keeping administration rights of your own network.

SIGNALLING

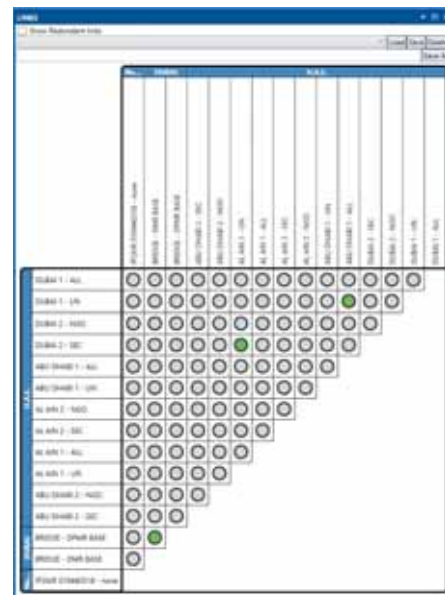
Supports analogue signalling (5 tones) and digital signalling (dPMR)

Once the link is established it can be used to link analogue radio or digital radio (dPMR). The link relays voice, data and signalling.

DISPATCHER RADIO ROOM LINK MANAGER

Link manager gives a global view of all existing links and the ability to manage them instantly.

Gives you the option to pre-program link configurations for future use and control the life span of existing and future links (I.e. 2 hours or 2 years).



<http://www.ip2air.com>

Icom France s.a.s.

Zac de la Plaine - 1, Rue Brindejonn des Moulinais
31500 TOULOUSE - FRANCE
WEB ICOM : <http://www.icom-france.com>
E-mail : icom@icom-france.com



FOUNDING MEMBER OF

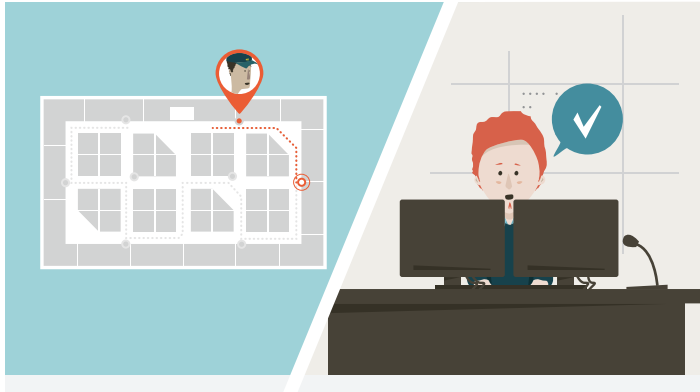


IP2AIR

Solutions



GUARD TOUR



Providing a safe and secure environment for security personnel by combining waypoint badges and indoor / outdoor positioning.

SECURITY ROUND

Guard tour software manages and monitors security rounds through the use of waypoint badges or positioning beacons. Report information is sent to guard and dispatcher in case of long delay between two check points.

INDOOR / OUTDOOR TRACKING

Guard tour software uses positioning beacons to locate users inside a building. Location can be activated for tracking or in case of alarms. The system will switch to GPS position for outdoor positioning.



RECORDER

Guard tour software records voice, text and status messages.

REPORT

Guard tour software provides relevant information for post process analysis.

TEXT MESSAGING

The guard tour software allows users and dispatcher to send text messages. The dispatcher can decide to convert text message in audio message.

VOICE OVER IP

Radio infrastructure can be installed in a separate building from the guard tour software. Voice and data will be sent over IP using the IP2AIR interface.

MAN DOWN LONE WORKER

An optional board plug inside the handheld detects movement and inclination of the radios. An alarm is sent when the radio meets the parameter defined.



<http://www.ip2air.com>

Icom France s.a.s.

Zac de la Plaine - 1, Rue Brindejonn des Moulinais
31500 TOULOUSE - FRANCE
WEB ICOM : <http://www.icom-france.com>
E-mail : icom@icom-france.com



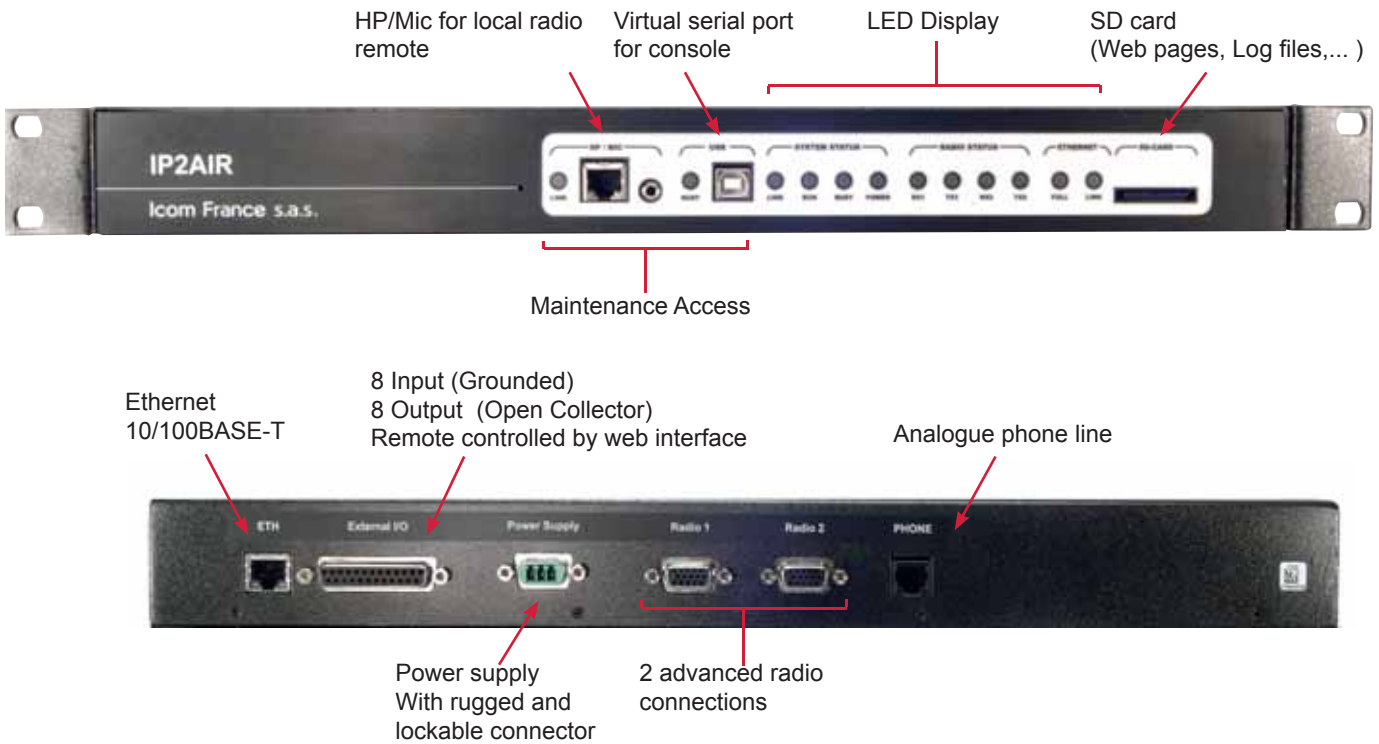
FOUNDING MEMBER OF



IP2AIR



Technical information



General	
Dimensions	19" compliant 1U Length:420mm Width:44mm Depth:145mm
Weight	1kg alone, 1.5kg with accessories
Temperature range	0° to +55°C
Delivered Accessories	
International power supply (100-240V 50/60Hz) with most countries plug adaptor	
USB, Ethernet and phone cables	
Kit for desktop mounting	
Electrical specifications	
Power supply	10V to 20V DC
Current drain (standard configuration)	500mA (never more than 2A)

Radio connections	
2 full duplex audio lines	
Input impedance	>10kOhm
Output low-impedance	~50Ohm
Bandwidth	flat band (0.5dB) 50Hz-3kHz
Nominal level	245mV at 1kHz
Dynamic	+12dB ref before saturation, -40dB ref with SINAD > 40dB
PTT output (open collector)	
Busy input (grounding input)	
4 wires RS-232 serial port	
Analogue input	
I/O Connection	
8 output open collector	
8 input by grounding	
1 power supply output	
1 regulated +5V output (200mA)	

<http://www.ip2air.com>

Icom France s.a.s.

Zac de la Plaine - 1, Rue Brindejonn des Moulinais
 31500 TOULOUSE - FRANCE
 WEB ICOM : <http://www.icom-france.com>
 E-mail : icom@icom-france.com



FOUNDING MEMBER OF

